

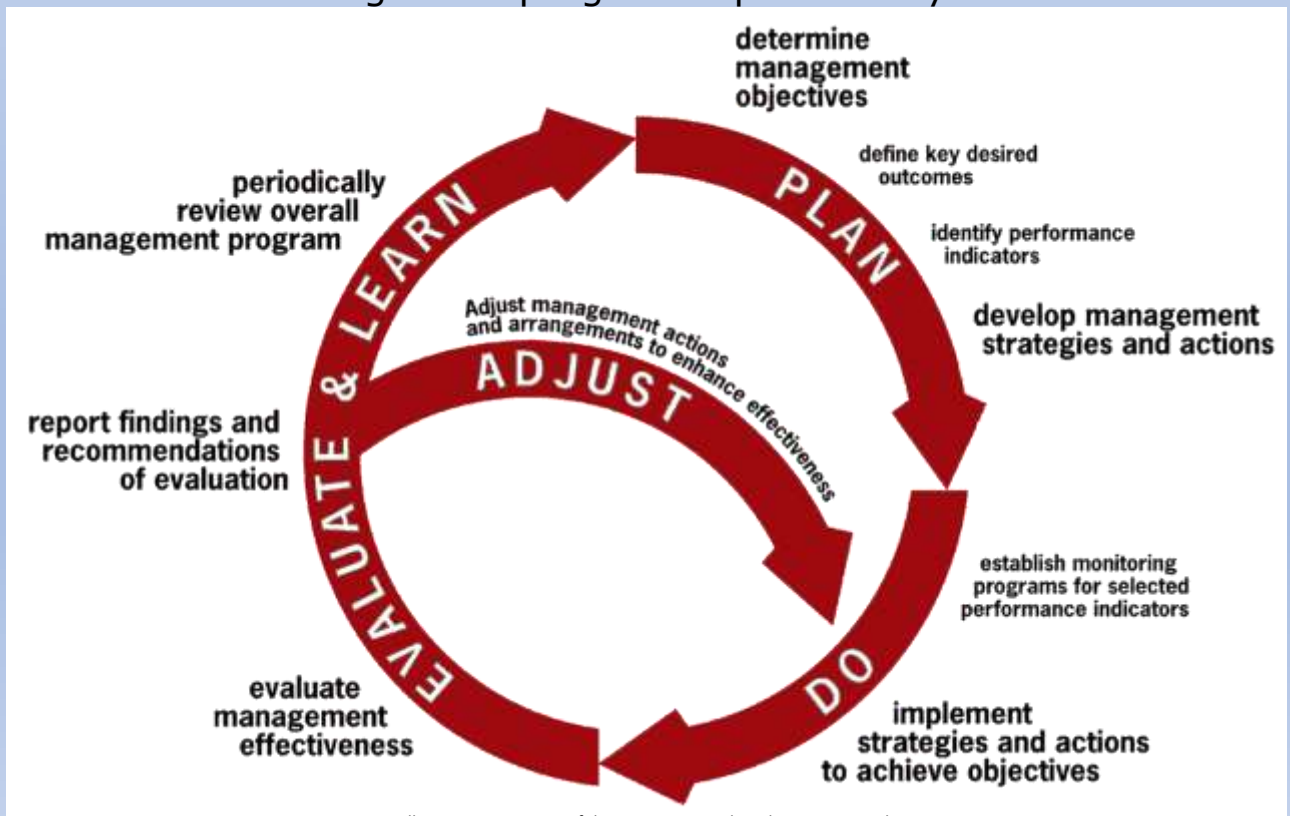
Management Strategy Evaluation

Meaning: the process of evaluating the consequences of alternative management options.

There are many sources of **uncertainty** in the management of fisheries. Some example of these are future environmental conditions that may affect productivity, future social, political and economic conditions, model inputs or the accuracy of the indicator used in the harvest strategy.

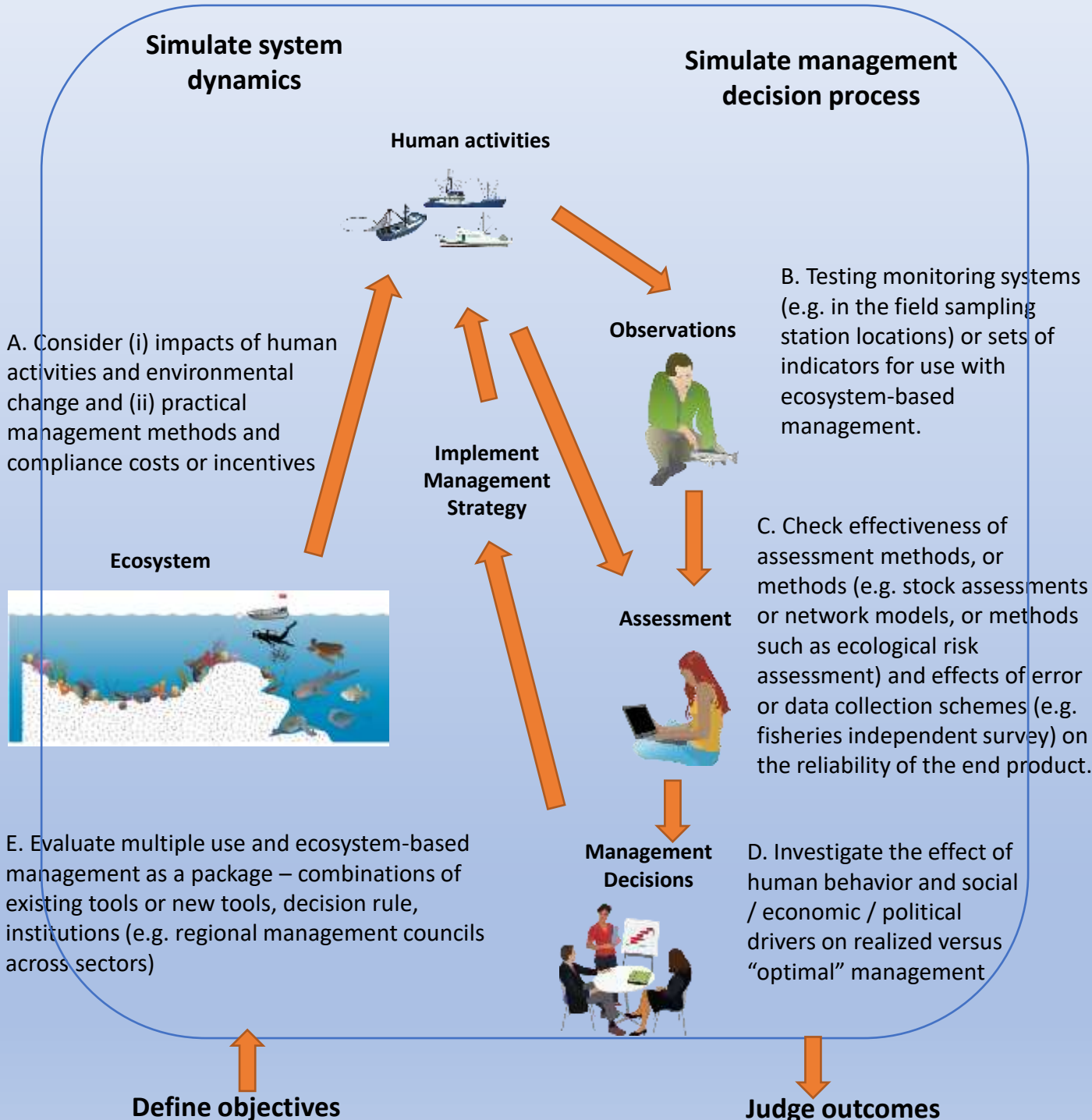
MSE is used to test each component of the **Adaptive Management Cycle**. The **Adaptive Management Cycle** is the process by which

- management objectives are defined;
- management strategies and actions are developed;
- management strategies and actions are implemented;
- the effectiveness of management strategies and actions are reviewed;
- adjustments are made to strategies and actions to improve their effectiveness; and
- the whole management program is periodically reviewed.



Management Strategy Evaluation

The aim of **MSE** test management strategies are robust to uncertainty. This includes all aspects of the adaptive management cycle including the decision making process.



	A	B	C
I	Yellow	Green	Red
II	Green	Red	Yellow
III	Green	Red	Red